



Jefferson Way, Coventry, CV4 9AN

**SHELDON  
BOSLEY  
KNIGHT**

LAND AND  
PROPERTY  
PROFESSIONALS



# Property Description

**\*\*AVAILABLE JANUARY - DEPOSIT ALTERNATIVE AVAILABLE\*\*** This three bedroom semi detached property is situated in Tile Hill, Coventry. It briefly comprises of a hallway, downstairs W/C, living room and a modern fitted kitchen with double oven, gas hob, washing machine and a fridge freezer with open plan dining area. On the first floor are two double bedrooms one having fitted wardrobes and an en-suite shower. There is a single bedroom and a family bathroom with a bath, W/C and sink.

The property benefits are a driveway fitting two cars and a rear garden with shed.

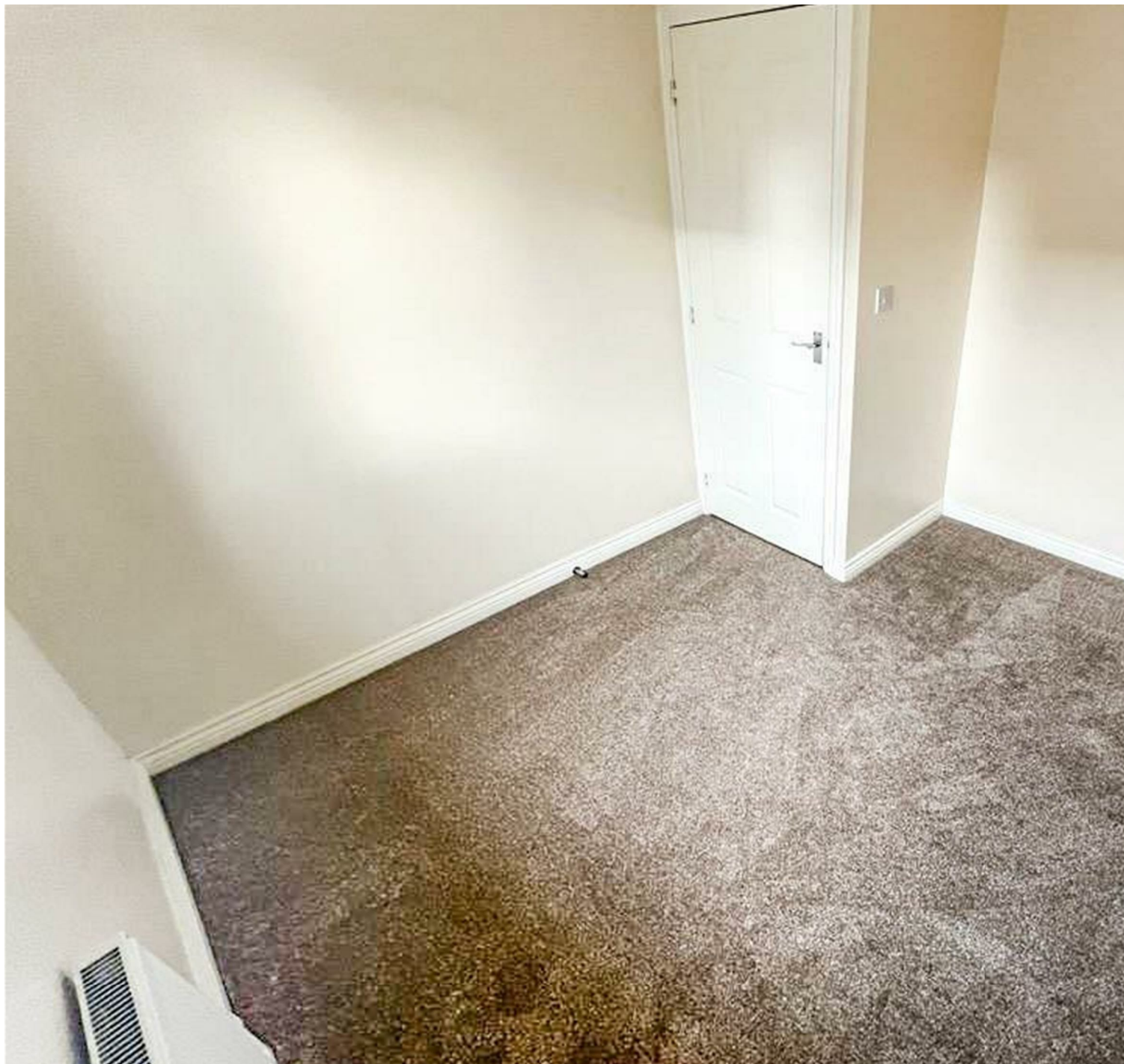
\*Council Tax Band D\*











## Key Features

- Semi-Detached
- Tile Hill
- Unfurnished Property
- Three Bedrooms
- En-Suite Bathroom
- Available Now
- Driveway
- Rear Garden
- Council Tax Band D

**£1,200 PCM**